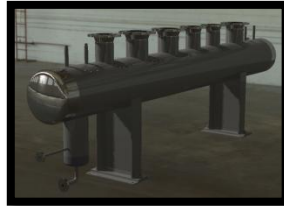
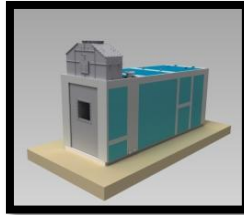


Company presentation

Enerflow is a design company that specializes in energy recovery plants and thermal machines and was founded in 1984. We are dynamic and fast and we would like to be your partner in the realization of projects.

Our area of operation extends in the following fields:

- Recovery boilers
 - Smoke tubes
 - Water pipes
 - Diathermic oil
- Heat exchangers
- Aerators
- Pressure tanks
- Metal carpentry and structures
- Thermal power stations
- Piping, isometrics and P&ID
- Stress analysis
- Special systems



For the development of our projects, we rely on a team of skilled technicians with various fields of expertise.

Enerflow will offer you support in the realization of the machine or system by offering:



- Feasibility studies
- Preliminary design
- Detailed design
- Calculus
- Manual drafting
- Assembly instructions
- Technical assistance
- Assembly supervision

Our company will support you from the preliminary study to detailed design of each element of the system. We offer support for prefabrication control in assembly plants.

Our technical design is rich in detail and list detailed materials that facilitate purchases. We provide assistance for drafting of instructions / installation drawings, we support personnel involved in systems installation.



Projects are developed using cutting edge hardware and software technology that is constantly updated. We follow training courses yearly in order to improve our interaction with the software and to ensure that our customers receive the best products.

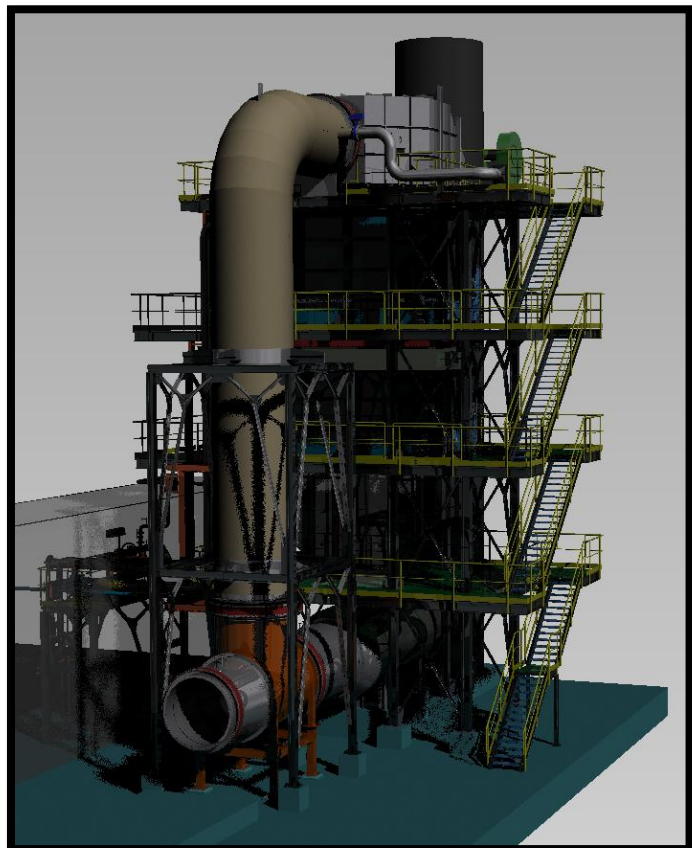
Used software :

- Autodesk Product design suite
- Esapro 3DP
- Esapro ISO
- Esapro PID

- Algor Pipe pack
- Microsoft Office
- Microsoft Project
- Calculation programs in agreement with:



- EN 13445
- EN 13480
- EN 12952
- EN 12953
- VSG
- VSR
- ASME VIII DIV.I



Best regards